

Vitan

Industrial for rent

BUILDING TYPE: P

Characteristics:

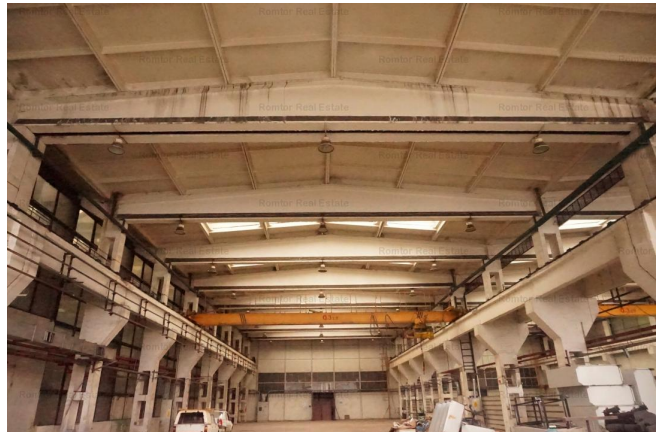
| | |
|----------------------------|---------------------------------|
| Type: 1 | Usable area: 1125m ² |
| Open Space | Floor: Et.0 |
| Construction year: 1970 | Height: 10 |
| Refrigerated spaces: - | |

Price:

3 937 € / month

Description:

Imobilul se afla situat in apropiere de CET SUD, cu acces facil dinspre Splaiul Unirii - Targul AUTOVIT. Spatii/suprafete disponibile: Hala: 1125 mp Birouri: 150 - 200 mp Facilitati: - 10-15 m inaltime hala - usa acces 4 x 5 m - toate utilitatile - post trafo - 500 Kwa - acces TIR - acces RATB. Pret: 3.5





0735219708

costel.alecu@romtor.ro

www.romtor.ro